

DISTRIBUTEUR CONSEIL



EN MATERIEL DE SECURITE

WWW.ITESA-TUNISIE.COM

- ▶ Intrusion
- ▶ Contrôle d'accès
- ▶ Automatismes
- ▶ Sécurité incendie
- ▶ Vidéosurveillance
- ▶ Sonorisation
- ▶ Appel malades
- ▶ Informatique
- ▶ Accessoires
- ▶ Des services techniques expérimentés
- ▶ Un réseau international proche de vous
- ▶ Un stock permanent
- ▶ Des équipes performantes pour étudier vos projets/systèmes
- ▶ Garantie nationale

P R D O X[®]
S E C U R I T Y S Y S T E M S





Available in 3 colours ○ ● ●

ORION

Conventional Fire Detection Control Panel



The Orion range of conventional control panels features three models with 2, 4 and 8 Zones of detection. Housed in a stylish modern ABS housing, the Orion is the ideal control panel for smaller installations.

Designed and manufactured to comply with the requirements of EN54 parts 2 and 4(1998) the Orion uses active End of Line monitoring to permit head removal protection as required by BS5839. (detector bases must be fitted with Diode)

Programmable Zone coincidence and alarm delay timer (0-10 min) are standard features to help reduce false alarms.

The one man test facility enables simple and rapid testing of the system at commissioning and during maintenance operations.

Features:

- Two, four and eight zone non-expandable control panels
- Up to 32 conventional smoke and/or heat detectors per zone
- Active End of Line monitoring
- Programmable non-latching zones
- Delay timer programmable on/off per zone
- Zone coincidence programmable for adjacent zones
- Three Access Levels
- One man test
- Supervised auxiliary 24 volt output
- 2 supervised/ monitored sounder circuits
- 3 remote inputs used for activation of Class Change, Day/Night mode, and Reset
- 2 Relay outputs fire and fault
- Power supply 1,7A at 28V DC
- Fully EN54 part 2 and 4 compliant
- Repeater output
- Multiplexed output for LEDs and additional relay outputs per zone (GFE-MPX-REL)
- Addressable Loop Interface card (GFE-ADLI)

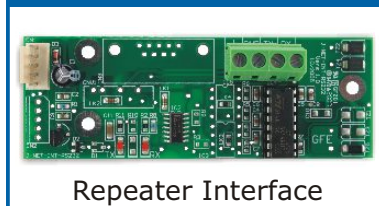
Orion Mini-Rep



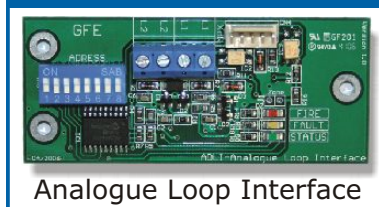
Orion Rep



ORION-INT-RS232



GFE-ADLI



ORION

Conventional Fire Detection Control Panel



Technical Specifications

Supply Specification	
Primary Supply Voltage - INPUT	85-264 VAC
Primary Supply Voltage - OUTPUT	28.5 V DC nominal
Primary Supply Current - OUTPUT	1.7 A @ 28.5 V DC nominal (max.)
Secondary Supply Voltage	21.0 min. - 27.2 max.V DC -BAT charger o/p 28V DC
Secondary Supply Current Output	1.1 Amp Maximum @ 20°C
Internal Battery Capacity - Maximum	2 x 12V x 7Ah Sealed VRLA Lead Acid Batteries
Mains Fuse	4 A -250V Slow Blow - 20mm
Battery Fuse	1.6 Amp - Resettable
Detection Circuit Specification	
Number of circuits	2,4 or 8
Max. Cable Resistance	40 Ohms
Max. Cable Capacitance	0.470 uF
Zone Current - Quiescent	5 mA maximum
Zone Current - Alarm	60 mA - Maximum
End of Line Monitoring	Active EOL - Capacitor
BS5839 Detector removal Compliant	YES provided diodes are fitted to detector base
Devices per Zone	32 Maximum - EN54 pt.2
Alarm Resistance Value	270 - 1000 Ohms
Sounder Circuit Specification	
Conventional Sounder Circuits	2 - 500mA max. current drive per circuit - fully monitored.
End of Line Resistor	10 K Ohms - 1/4 Watt
Monitoring	Open and Short Circuit
Alarm Voltage	27.5 V DC Nominal
Fuse Rating	1.1 Amp resettable
Auxiliary Outputs Specification	
Auxiliary Relay Outputs	1 Fire (COM-NC-NO) - 1 Fault (COM-NC) non-supervised
Relay Contact Rating	50 V DC - 1 Amp resistive loads
Remote Input Specification	
Evacuation (CC) - Day/ Night Mode	Non-Latching - Voltage free contact
Reset	Non-Latching - Voltage free contact
Mechanical & Operating Spec.	
Max. Humidity	95% RH Non-Condensing
Operating Temperature	0 °C to 40 °C
Weight	1.7 Kg - 7 Kg (inc. 2 x 7AH bat.)
Dimensions	272 (W) x 404 (H) x 107 (D) mm
Order Code	
ORION 2	2 Zones Conventional Fire Detection Control Panel
ORION 4	4 Zones Conventional Fire Detection Control Panel
ORION 8	8 Zones Conventional Fire Detection Control Panel

ORION MINI REP



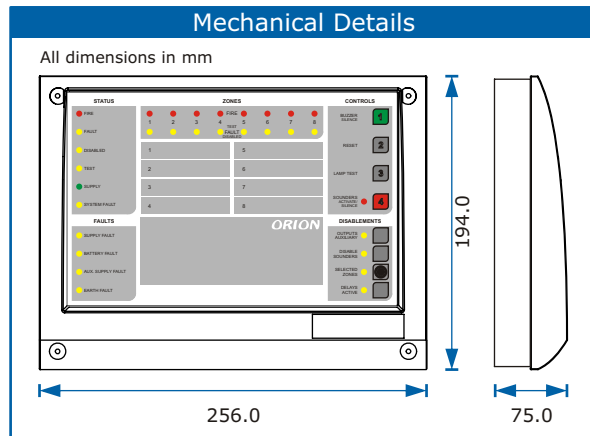
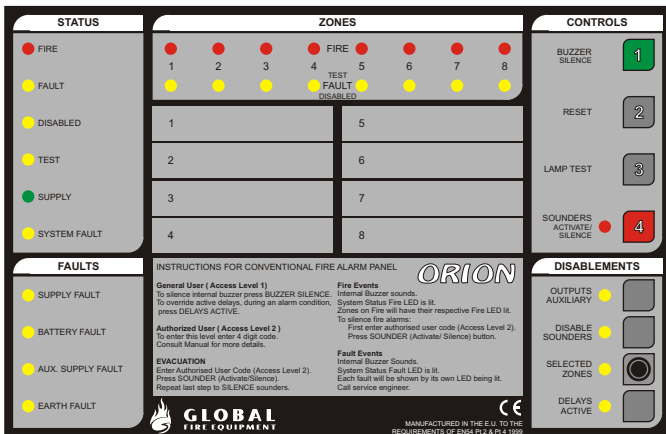
Available in 2 colours

The **ORION MINI REP** will provide remote control, system status display and monitoring functions. All Fire, Fault, Test and Disabled conditions are displayed. User is able to control all functions at access Level's 1 and 2. Compliant with EN-54 part 2. Display and Control Functions are replicated and shown in the same manner as on the Orion Fire Detection Panel. Access to Level 2 is via a four digit code (same code as used on the Orion Conventional Panel).

It includes as standard an RS-232 interface. This unit is also compatible with all of GFE's standard data loop interfaces allowing the Orion Mini Rep panel to be interfaced to an ORION conventional panel using 4 different interfacing technologies:

- RS-232
- RS-485
- Fibre Optics
- TCP/IP (Specific for Orion Conventional Systems)

A maximum of 4 Orion Mini Rep panels can be connected to a single Orion Conventional Fire Detection Panel. When using RS-232 interfaces only one repeater panel will offer both control and display of the system. The remainder of the repeater panels will only offer system status display. In order to have control from more than one Orion Mini Rep panels any of the other interfacing technologies can be used.



Order Code	ORION MINI REP
Supply Voltage	28V DC nominal derived from Orion Aux. Supply O/P
Supply Current	40 mA
Connections	+Supply, -Supply, TX and RX
Repeater Network	RS-232 - 1 Display & Control 3 Display Only RS-485, Fibre Optics, TCP/IP - 4 units max. Display and Control
Max. Humidity	95% RH Non-Condensing
Operating Temperature	0 °C to 50 °C
Dimensions	256.0 (L) x 194.0 (W) x 75.0 (H) mm
Weight	1.4 Kg

ORION REP



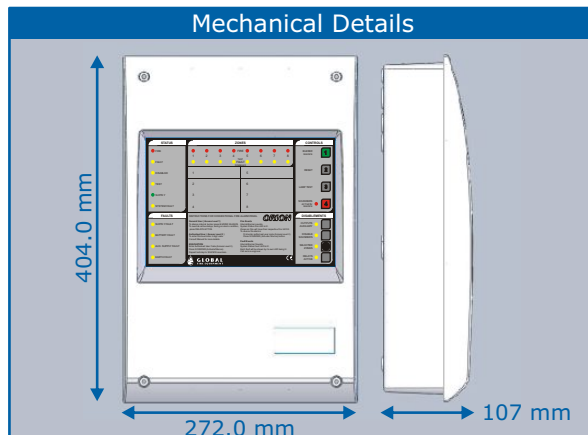
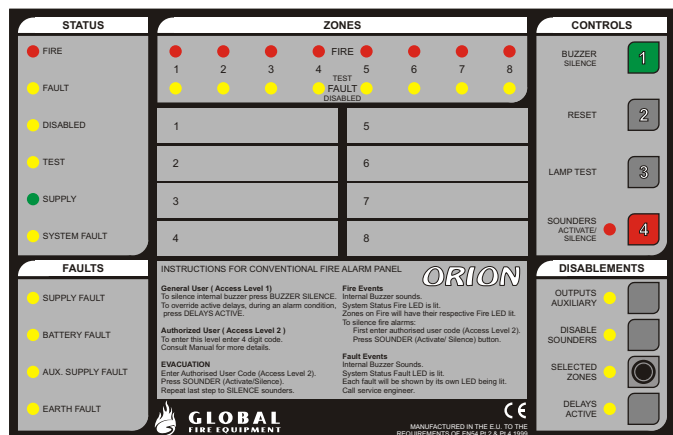
Available in 3 colours ○ ● ●

The **ORION REP** will provide remote control, system status display and monitoring functions. All Fire, Fault, Test and Disabled conditions are displayed. User is able to control all functions at access Level's 1 and 2. Compliant with EN-54 part 2. Display and Control Functions are replicated and shown in the same manner as on the Orion Fire Detection Panel. Access to Level 2 is via a four digit code (same code as used on the Orion Conventional Panel).

It includes as standard an RS-232 interface. This unit is also compatible with all of GFE's standard data loop interfaces allowing the Orion Mini Rep panel to be interfaced to an ORION conventional panel using 4 different interfacing technologies:

- RS-232
- RS-485
- Fibre Optics
- TCP/IP (Specific for Orion Conventional Systems)

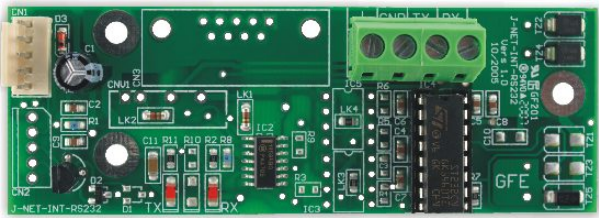
A maximum of 4 Orion Rep panels can be connected to a single Orion Conventional Fire Detection Panel. When using RS-232 interfaces only one repeater panel will offer both control and display of the system. The remainder of the repeater panels will only offer system status display. In order to have control from more than one Orion Mini Rep panels any of the other interfacing technologies can be used.



Order Code	ORION REP
Supply Voltage	28V DC nominal derived from Orion Aux. Supply O/P
Supply Current	40 mA
Connections	+Supply, -Supply, TX and RX
Repeater Network	RS-232 - 1 Display & Control 3 Display Only RS-485, Fibre Optics, TCP/IP - 4 units max. Display and Control
Max. Humidity	95% RH Non-Condensing
Operating Temperature	0 °C to 50 °C
Dimensions	272 (W) x 404 (H) x 107 (D) mm
Weight	1.4 Kg

ORION-INT-232

Orion Repeater Interface

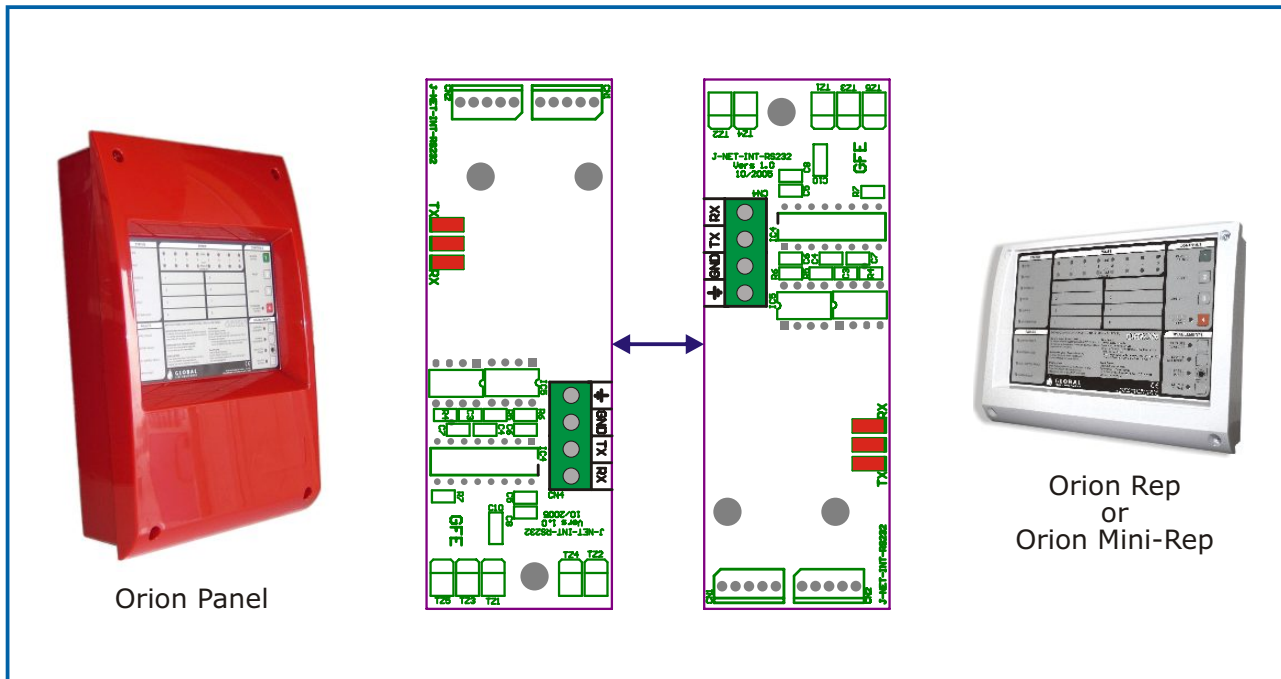


The ORION-INT-RS 232 interface module allows GFE's Orion Conventional Panels to be interfaced to Orion Mini-Reps and Orion-Reps using a 4-core data communication cable suitable for serial data transmission.

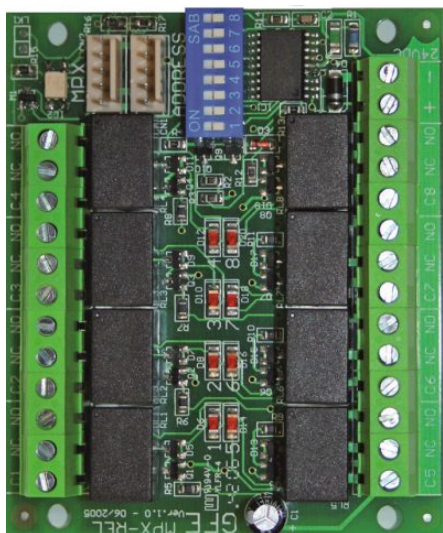
This interface is compatible with the following panels and repeaters:

- 1) Orion Conventional Panel 2, 4 and 8 zones - version 1.5 and above
- 2) Orion Rep and Orion Mini-Rep

The maximum distance between panel and repeater is 100 m.



Technical Specifications	
Supply Voltage	28V DC nominal - range 17 to 30 V DC
Supply Current	5 mA
Software & Hardware Compatibility	Orion Conventional Panel-version 1.5 and above Orion Mini-Rep and Orion Rep
Max. Humidity	85% RH Non-Condensing
Operating Temperature	0 °C to 40 °C
Dimensions	100.3 (L) x 35.0 (W) x 18 (H) mm
Weight	20 g
Order Code	
ORION-INT-RS232	Orion RS-232 Repeater Interface



GFE-MPX-REL

Orion Multiplexed Zone Relay Outputs



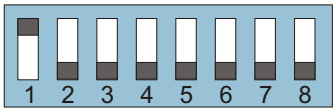
Interface card that provides an individual zone in alarm indication via a voltage free change-over relay contact for each zone in an Orion conventional panel. There are 2 versions: 4 and 8 zone and they are always used for indication of ALARM/ FIRE conditions.

There is also a LED indication of ALARM condition for each individual zone. The LED RED indicator will be ON when the relay is active. These relay outputs are not monitored.

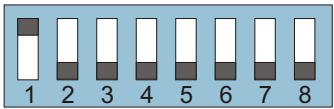
The DIL switch allows one relay output for a particular zone in the range 1 to 8 to be programmed as delayed and this is achieved using the first three switches (1 to 3) and the delay time will be provided in the range between 0-10 minutes using the next four positions (4-7) on the DIL switch. The module requires an external 24 V DC supply. Connection to the Orion PCB board is via a 5 way flat cable fitted with Molex type polarised connectors.

Switches 1-3
Selects delayed zone

Switches 4-7
Set the delay time.

ON  OFF

Switch 8 - Not used

ON (1)  OFF (0)

Zone	Time		
1 = 000	0 = 0000	4m = 0001	
2 = 100	30s = 1000	4m30s = 1001	
3 = 010	1m = 0100	5m = 0101	
4 = 110	1m30s = 1100	6m = 1101	
5 = 001	2m = 0010	7m = 0011	
6 = 101	2m30s = 1010	8m = 1011	
7 = 011	3m = 0110	9m = 0111	
8 = 111	3m30s = 1110	10m = 1111	

Technical Specifications	
Supply Voltage	28V DC nominal
Current - Quiescent	7 mA - No relays active
Current - Zones in Alarm	7mA + 15 mA per active relay
Timer	15 settings from 0 to 10 minutes
Max. Humidity	95% RH Non-Condensing
Operating Temperature	0 °C to 50 °C
Dimensions	88.0 (L) x 72.5 (W) x 18.0 (H) mm
Weight	4 zone - 60 g 8 zone - 95 g
Order Code	
GFE-MPX-REL-4	Orion Multiplexed 4 Zone Relay Board
GFE-MPX-REL-8	Orion Multiplexed 8 Zone Relay Board



GFE-C

Conventional Fire Detectors



Product Features:

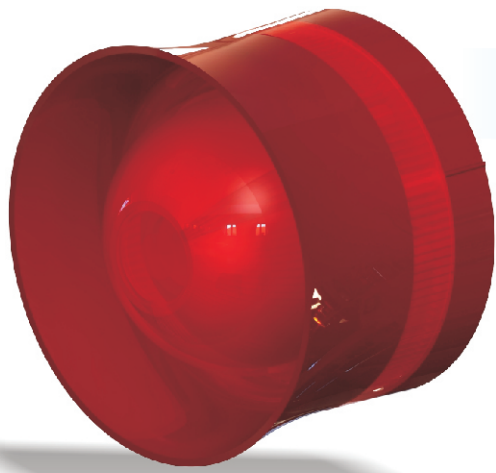
- Dual LEDs for 360° visibility
- Advanced detection and discrimination algorithms
- Easy installation and maintenance
- Sleek low-profile housing
- Durable sensor head, no need for replacement
- SMD circuit board design. High quality and reliability guaranteed
- Integrated heat detector for GFE-SH-2L
- Sensor Base Option: Regular 4 or 5 inch base

The GFE-C series of Conventional Fire Detectors have been designed to be fully compatible with Global Fire Equipment's range of conventional control panels.

Compliant to EN54 pt. 5 and 7 and certified by DIFT for CPD compliance, the GFE-C series detectors are available in Optical, Heat and combined Smoke/Heat detector versions.

Technical Specifications	
Supply Voltage	12-30 V DC
Current - Quiescent/ Surge	100/ 150 uA max.
Current - Device in Alarm	80 mA Maximum - Alarm Load 340 Ohms + 3 Volt Drop
Smoke Sensitivity	2.31 +/- 1.37%FT Obscuration (UL) - 0.10-0.14 dB/m (EN54)
Coverage	100 m ² (Smoke) - 50 m ² (Heat) - Height Dependent
Cable Size	0.5-2.5 mm ²
Reset Time	1 second max.
Colour/ Case Material	White / PolyCarbonate (PC) - FR 94V0
Oper. Temperature/ Max. Humidity	0 °C to 50 °C/ 95% RH Non-Condensing
Dimensions/ Weight	100.0 mm (Diameter) - 46.0 mm (Height) / 82 g (without base)

Order Code	Type	LED O/P	CE Marking	Approval	CPD No.
GFE-S-2L	SMOKE	Y - 15 mA	Y	EN54 pt. 5	0845-CPD-232-1489
GFE-H-2L	HEAT	Y - 15 mA	Y	EN54 pt. 7	0845-CPD-232-1488
GFE-SH-2L	SMOKE & HEAT	Y - 15 mA	Y	EN54 pt. 5 & 7	0845-CPD-232-1490



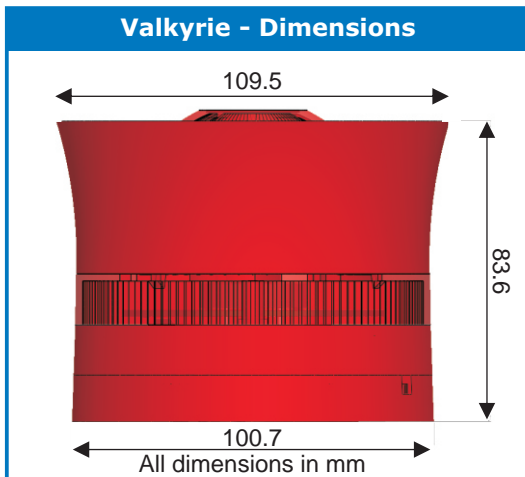
Available in 2 colours  

VALKYRIE C

Conventional Wall Sounder



The Valkyrie C is a low consumption sounder/ beacon designed to be used as an unobtrusive low profile wall sounder. This improves the aesthetics of the fire alarm system. Four different tones are available and selected using DIL switches 1 and 2. The Sound level can be lowered if required by setting DIL switch no. 4 to OFF.

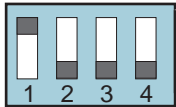


TONE CONFIGURATIONS

Switch 1
Spare

Switch 2 and 3
Tone Selection

Switch 4
High-Low Volume Selector

ON (1)  OFF (0)

Technical Specifications	
Supply Voltage	17V to 30 V DC
Current - Quiescent	0.5 mA
Current -Alarm Low. Freq.	4.1 mA (Max.) - 2.6 mA (Min.)
Current -Alarm High. Freq.	7.5 mA (Max.) - 3 mA (Min.)
Current -Alarm Beacon	1.4 mA
Sounder Output - Continuous	102 dB @ 1 m (Max.) - 97 dB @ 1 m (Min.)
Sounder Output - Low Freq.	103 dB @ 1 m (Max.) - 98 dB @ 1 m (Min.)
Sounder Output - High Freq.	110 dB @ 1 m (Max.) - 100 dB @ 1 m (Min.)
Max. Cable Size	2.5 mm ²
Max. Humidity	85% RH Non-Condensing
Operating Temperature	0 °C to 40 °C
Enclosure - Material	Red/ White ABS - FR rating 94V0
Protection Category	IP44
Dimensions	109.5 mm (Dia) x 83.6 mm (H)
Weight	270 g - including detector base
Order Code	
VALKYRIE CS	Valkyrie Conventional Wall Sounder
VALKYRIE CSB	Valkyrie Conventional Wall Sounder/ Beacon



GFE-MCPC

Conventional Manual Call Point

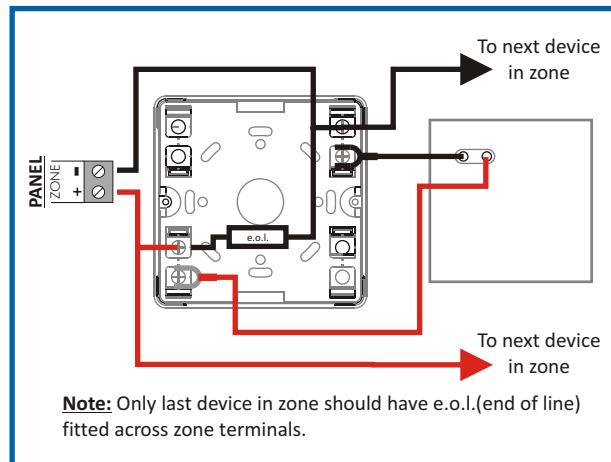
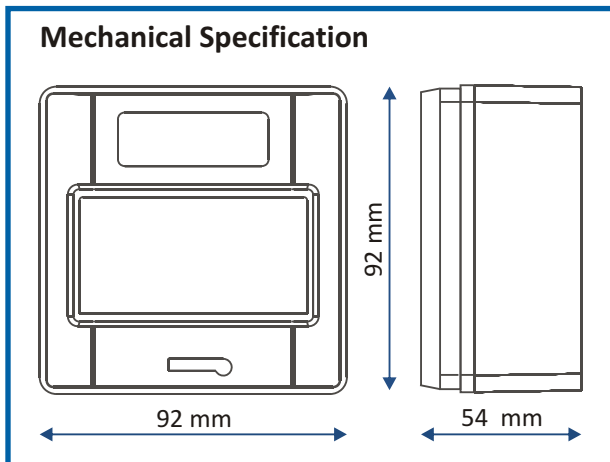


The GFE-MCPC is a Conventional Manual Call Point that can be both surface or flush mounted. It is designed and manufactured to comply with EN54 pt.11.

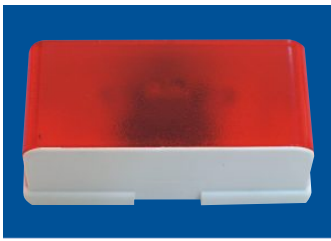
A bi-colour LED flashes Green when the unit is connected to a control panel and is illuminated Red when in Alarm.

The unit is supplied complete with a hinged flap which protects the trigger element from accidental activation and reduces malicious activations as two actions are required to activate it.

Another convenient feature of the GFE-MCPC is that after an activation the plastic insert is easily reset using the supplied key, replacement is not required.



Technical Specifications	
Supply Voltage	16-30 V DC
Current - Quiescent	200 uA
Current - Device in Alarm	50 mA @ 24V DC - Alarm Resistance 490 Ohms max.
Cable Size	0.5-2.5 mm ²
Colour/ Case Material	Red / ABS Flame Retardant rating 94V0
Protection - IP Rating	IP24
Oper. Temperature/ Max. Humidity	-10 °C to 50 °C/ 95% RH Non-Condensing
Dimensions/ Weight	92.0 (W) x 92.0 (H) x 54.0 (D) mm/ 152 grams
Order Code	
GFE-MCPC	Conventional Manual Call Point



REM-IND

Flashing Remote Indicator



This remote indicator can be used with any fire alarm detector, be it of the conventional or addressable types, to indicate remotely the activation of the relevant detection device.

Its main characteristics are the high visibility due to the alternate blinking of two high efficiency LEDs and the wide operating voltage range (3 to 15V DC) with a minimum 300 uA current consumption. The connections of this device are non-polarised.

This unit comes complete with a face plate compatible with standard flush mounting boxes.

Technical Specifications	
Supply Voltage	5-15 V DC
Supply Current	300 uA Quiescent - 15 mA max. LED ON
Max. Humidity	85% RH Non-Condensing
Operating Temperature	0 °C to 40 °C
Dimensions	68 (L) x 33 (W) x 25 (H) mm
Weight	20 g

Order Code	
REM-IND	Remote Indicator